

**EDGEWOOD
SOIL
&
WATER
CONSERVATION
DISTRICT**

**2011 – 2012
REPORT**

Organization

- ▣ The Edgewood Soil & Water Conservation District covers 487,535 acres in portions of southern Santa Fe, eastern Bernalillo, and northern Tarrant counties. This consists of approximately 18,000 acres of irrigated cropland, 200 acres of dry cropland, 70,000 acres of urban land, and close to 400,000 acres of rangeland.
- ▣ A referendum for the formation of the District was carried by popular vote of landowners, as provided in the New Mexico Soil & Water Conservation District Law. The Certificate of Organization was issued on September 27, 1941.

Board Members

David King - Chairman
Lewis Fisher - Vice-Chair
Bill King - Secretary / Treasurer
Mark Anaya – Member
Juan Sanchez - Member
Leo Smith - Member
Art Swenka - Member

Staff

Brenda Smythe - Manager
Kelly Smith - Technician

Contract Staff

Jerika Lujan - College Intern
Meagan Gallegos – Admin Assistant
Erica Smythe – Website & Special Projects
Jim Frost – Grass Drill Operator

Meeting Information

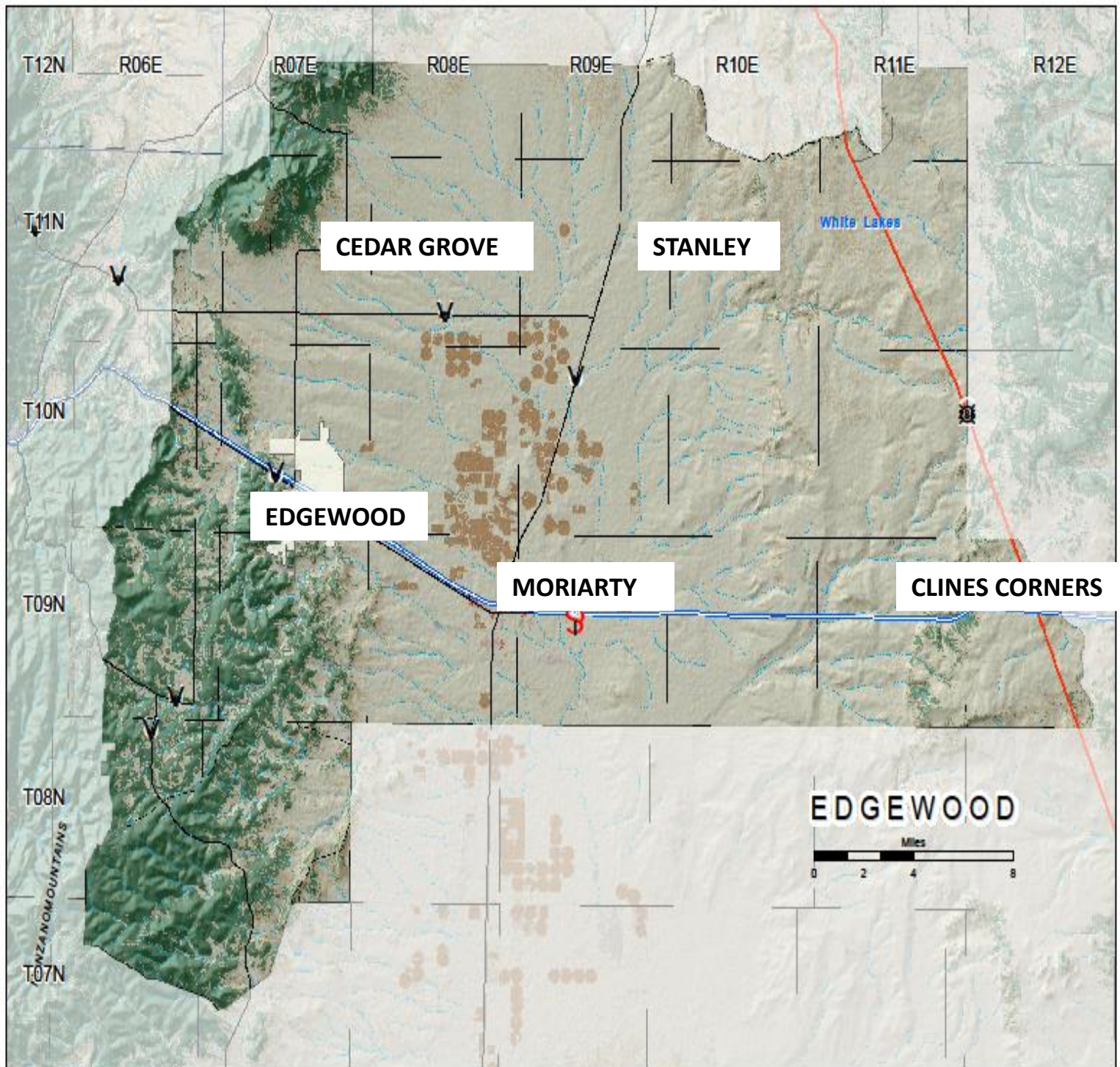
The board meets the first Thursday of every month at 10:00 AM at the District office, which is located at 2506 Route 66, Moriarty, NM 87035.

Mission Statement

**The Mission of the
Edgewood Soil & Water
Conservation District
is to protect, restore,
enhance, and promote
the wise use of natural resources.**

**This will be achieved through
development of projects, education of
public, the cooperation of
landowners/users, agencies and other
political subdivisions of the state.**

District Boundary Map



Farm Bill Implementation

- Edgewood Soil & Water Conservation District (SWCD), along with neighboring East Torrance SWCD is assisted by the Natural Resources Conservation Service (NRCS).
- Farm Bill funds allocated funding for the Estancia Field Office exceeded \$304,000 which provided assistance to local agricultural producers with conservation measures such as livestock pipelines, water storage facilities, cross fencing, diversion construction and Low Energy Precision Application (LEPA) Conversions.

Basic Funding

- ▣ The District receives \$10,000 from the New Mexico Department of Agriculture which provides partial funding for administration. In order to receive this funding the district must follow a base schedule of required items such as:
 - ▣ An Approved Budget
 - ▣ An Annual Plan of Work
 - ▣ An Annual Action Plan
 - ▣ Following Open Meetings Act
 - ▣ Board Member Attendance at Meetings
 - ▣ District Sponsored Conservation Information
 - ▣ Cost-Share Assistance to Landowners

Programs That Benefit You!

COST-SHARE ASSISTANCE PROGRAM

- ▣ The Cost-Share Assistance Program is provided to landowners within the District Boundary (outside incorporated areas)
- ▣ Funding is provided through Mill Levy Collections.
- ▣ Reimbursement for projects is available for up to \$3500 per person/per year.
- ▣ During the 2011 – 2012 fiscal year:
 - ▣ 6 Essential use (potable) and non-essential use (outdoor use) Water Harvesting Structures were constructed
 - ▣ 3 Windbreaks were planted
 - ▣ 3 Drip Irrigation Systems were installed
 - ▣ 1 Storage Facility was constructed

How Does the Cost Share Program Work?

1. Fill out application
2. Submit with tax bill for proof of ownership within the District
3. **IF** approved through ranking–
4. Letter sent by Manager announcing approval
5. Appointment set up by Technician, Kelly Smith for planning & cost estimate
6. Once landowner agrees with cost-estimate, approval to begin (after July 1st)
7. Project Complete by June 10th, and ready for inspection and reimbursement

Reimbursements

▣ Example 1

2,000 sq. ft home

Essential Use Water
Harvesting System

Average cost-\$12,000

Reimbursement –
Maximum \$3500.

▣ Example 2

2,000 sq. ft home

Non-essential use Water
Harvesting System

Average Cost- \$3500

Reimbursement – 50%
\$1700

**Under Ground
Water Harvesting
System Constructed
with Cost-Share
Assistance Funding**

2 - 1700 Gallon Underground Water Harvesting Tanks



Buried Underground Tank



Water Harvesting System Pressure Tank



**Simple Above
Ground Water
Harvesting Tank
Directly Connected
to Gutters**

305 Gallon Bushman Tank

This tank provides reasonable storage capacity in narrow space confines.



Leading by Example

**Edgewood
Soil & Water
Conservation District
Administrative Office
Water Harvesting System**

1600 Gallon Water Harvesting Tank North-West Side of Building



1-1600 Gallon Tank & 2-3000 Gallon Tanks South Side of Building



**During a 1" Rainfall the
catchment yield from our building
with a 90% roof efficiency, we
have the potential to catch
4,849 Gallons of Water!**

**With the average annual rainfall in
the Estancia Basin of 12",
we have the potential to collect
approximately
57,222 gallons of water per year!**

**This water is used for all
landscape.**

Hazardous Fuels Reduction Projects

Watershed Health & Restoration Program

- ▣ *Edgewood, along with Claunch-Pinto, Ciudad & East Torrance Soil & Water Conservation Districts, received Water Trust Board and NM State Forest Funding for watershed health projects. During last fiscal year, Edgewood SWCD allocated \$96,666.67 for 8 projects.*

Before Thinning



After Thinning



Hazardous Fuels Reduction Before Thinning



After Thinning



Fuel Breaks

This next photo will show a 300-foot fuel break.

A fuel break is a wide opening in vegetation created as a barrier to slow or stop the progress of a wildfire.

Private Land Fuel Break to National Forest Boundary for Firefighting Access



Fuel Break



South Mountain Project

The Edgewood SWCD owns 373 acres on the top of South Mountain.

Hazardous fuels reduction for watershed health along with fire suppression has been addressed.

SOUTH MOUNTAIN PROJECT

IN COOPERATION WITH NM STATE FORESTRY & SANTA FE COUNTY
WILDLAND FIREFIGHTERS.

THIS PROJECT PROVIDES WATERSHED PROTECTION & FIREFIGHTING
ACCESS.



CUT-STUMP
TREATMENT ON OAK
BRUSH FOR WILDLAND
FIRE-FIGHTER ACCESS
AND CREATING THE
SAFETY ZONE

ROAD WIDENED TO ALLOW
ACCESS TO FIRE FIGHTING
EQUIPMENT

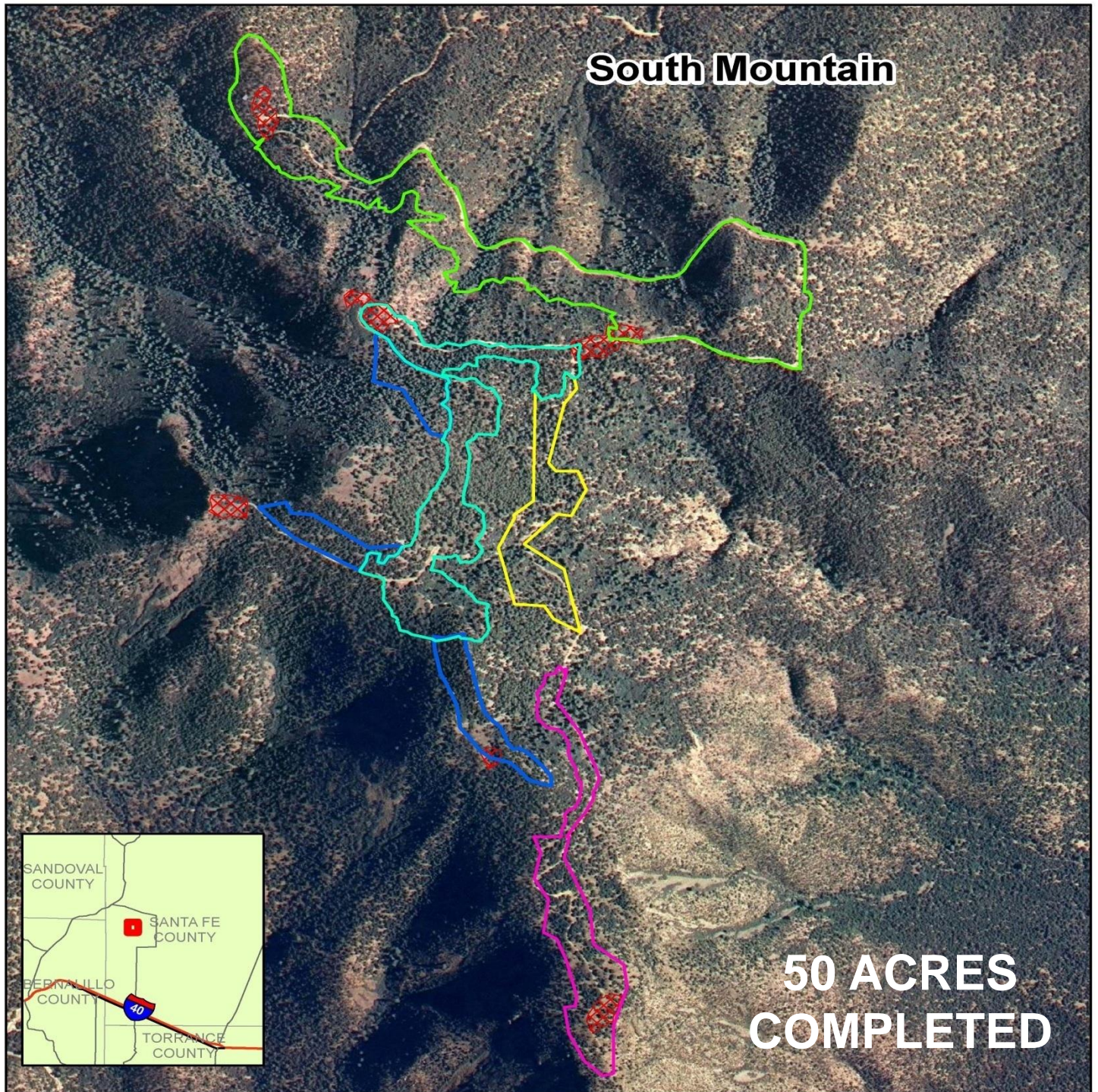


South Mountain Fire Safety Zones

Fire Safety Zones are created for the protection of our firefighters and equipment. This is also used as a staging area in the event of a fire. In cooperation with the Santa Fe County Fire Department, the District has 6 strategically designed safety zones on South Mountain.



SOUTH MOUNTAIN PROJECT



Landstatus and Initial Attack zone
Information provided by the BLM,
New Mexico Office. No warranties
are made regarding the accuracy of this data.
Datum: NAD83
Projection: UTM Zone 13N
Produced by NM EMNRD Forestry Division,
Timber Forester 1-24-2008

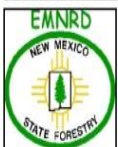
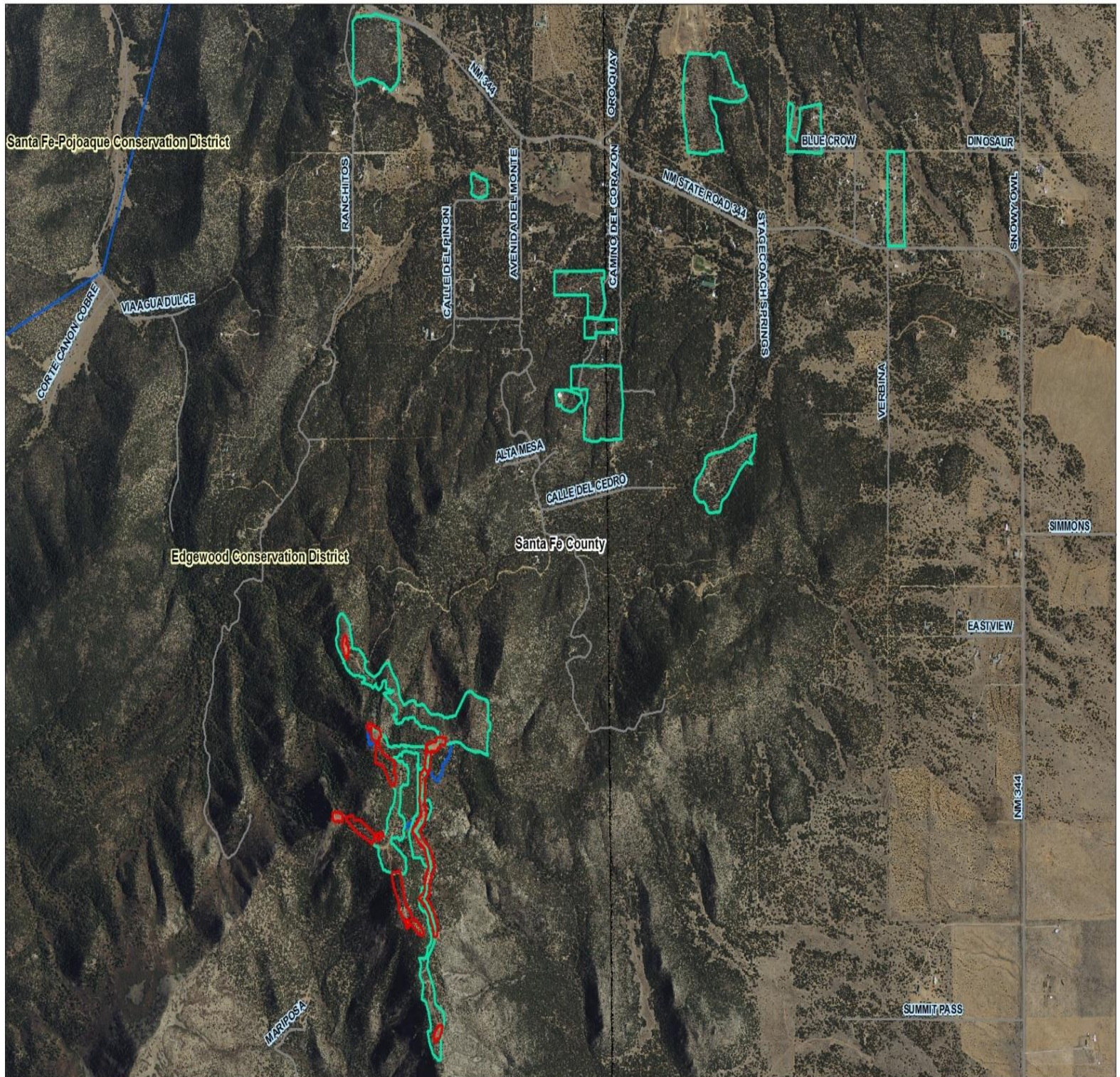
Wednesday, August 24, 2011
2:47:42 PM



1:8,500		Legend	
	South_MTN_Part_A_WTB_6_5_09		south 3-29-2011
	South_MTN_Part_B_WTB_9_17_09		thinned area
	South_MTN_Part_D_WTB_9_17_09		
	South_MTN_Part_C_WTB_9_17_09		

Highlighted Hazardous Fuels Reduction Projects

San Pedro Area



Datum: NAD83 Projection: UTM Zone 13N
No warranties are made regarding the accuracy of this data.
Produced by NM EMNRD Forestry Division, Timber Forester

0 0.1 0.2 0.3 0.4
Miles

1:15,000

Legend

- 2013_FY_NMSF_Air_Projects
- 2011_NMSF_Data_Template_BERN_Estancia_Basin_all_2011
- Air_Estancia_Basin_upto_2011
- Air_Estancia_Basin_2011_Files

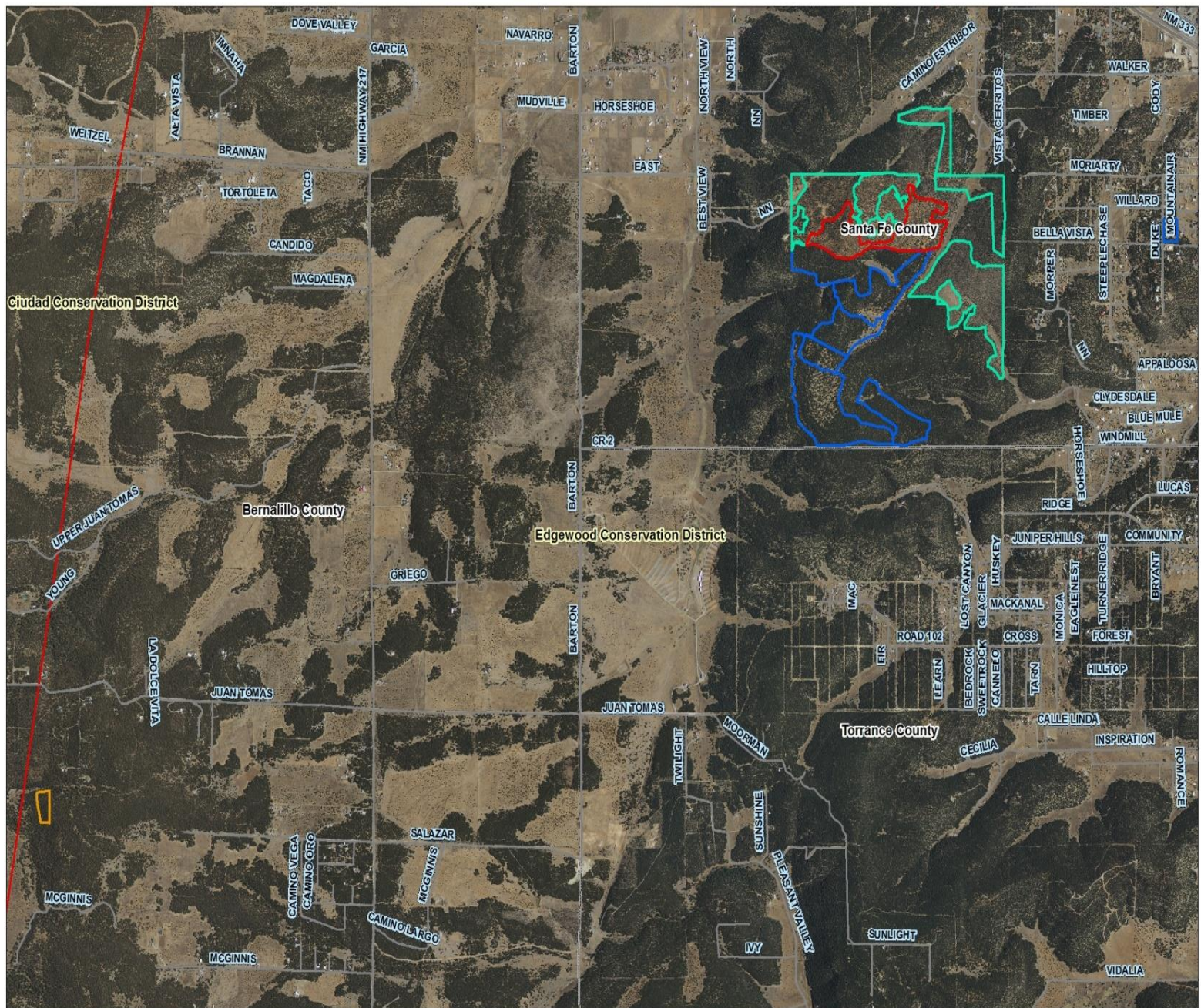
nm_swcd

- Ciudad Conservation District
- Clauch-Pinto Conservation District

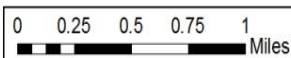
- East Torrance Conservation District
- Edgewood Conservation District
- County

Poker Draw

Highway 333/Barton Near Edgewood



Datum: NAD83 Projection: UTM Zone 13N
No warranties are made regarding the
accuracy of this data.
Produced by NM EMNRD Forestry Division,
Timber Forester




1:20,000

Legend

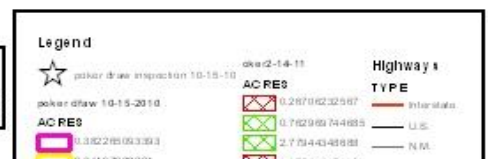
-  2013_FY_NMSF_All_Projects
- 2011_NMSF_Data_Template
-  All_Estancia_Basin_upto_20
-  All_Estancia_Basin_2011_File

nm_swcd

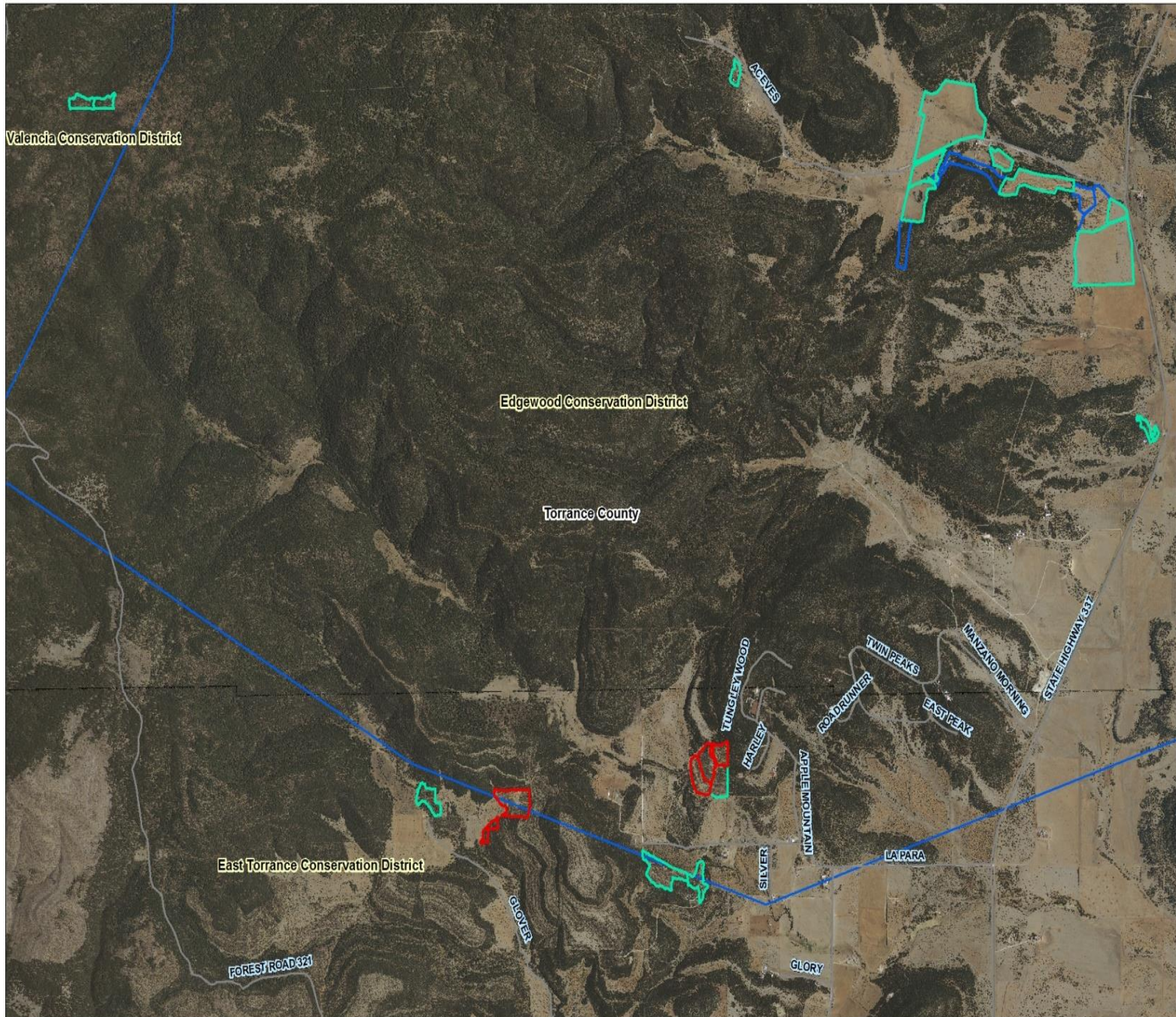
-  Ciudad Conservation District
  Edgewood Conservation District
 Claunch-Pinto Conservation District
 County

- East Torrance Conservation District
 Edgewood Conservation District
 County

Poker Draw Project



South of Chilili



Datum: NAD83 Projection: UTM Zone 13N
No warranties are made regarding the accuracy of this data.
Produced by NM EMNRD Forestry Division,
Timber Forester

0 0.3 0.6 0.9 1.2 Miles

1:25,000

Legend

- 2013_FY_NMSF_Ail_Projects
- 2011_NMSF_Data_Template_BERN_Estancia_Basin_ail_2011
- Ail_Estancia_Basin_upto_2011
- Ail_Estancia_Basin_2011_Files

nm_swcd

- Cludad Conservation District
- Clauch-Pinto Conservation District

- East Torrance Conservation District
- Edgewood Conservation District
- County

Native Grass Reseeding Project

Included with our native grass seed sale program, the District owns and operates a compact native grass seed drill. Projects are planned by the District Technician, and planted by the District Drill Operator. Costs depend on types of grass and acreages.



Drill Operator, Jim Frost

On land areas that cannot be stabilized by ordinary conservation treatment or management, and in effort to reestablish permanent native grasses, Edgewood SWCD has both cool and warm season native grass seed available for small property lots and large acreages.

On critical land areas including rangelands, pastures, and forests, Edgewood SWCD can drill native grasses with our tractor and specialized, compact native grass seed drill where desirable vegetation is below the level for natural reseeding to occur.



GREEN WASTE EVENTS

Green Waste Events are a partnership between Bernalillo County, Ciudad Soil & Water Conservation District, New Mexico Association of Counties, and the Edgewood Soil & Water Conservation District

- ▣ FREE Recycling for Bernalillo County residents of property green waste.
 - Green Waste is the product remaining after tree thinning and/or pruning
- ▣ After green waste is chipped, the product is available for landowners to use as mulch or for erosion control
- ▣ The next event will be held at the East Mountain Transfer Station

October 13th – October 21st
&
November 24th – December 2nd
8:00 AM – 4:00 PM



Native Grass Seed & Tree Sales

Popular Sale Items



Russian Sage



Black Chokeberry



Blue Grama Grass

Native Grass Seed is available year-round for sale.

Low Cost plants are typically available March & October.

Information & Education

Find us on the web - - WWW.ESWCD.ORG

- ▣ On the site you can find information regarding:
 - District Background
 - District Cost-Share Assistance Program
 - Water Trust Board Grant Funding
 - Project Photos
 - YCC Grant Accomplishments & Photos
 - Native Seed & Tree Information
 - Staff Progress to Date
 - Partner Links



Partnerships

The Edgewood SWCD is committed to our partners. Several trainings and meetings have been held in cooperation with neighboring Districts, as well as state and federal partners.

- Rainwater Catchment Systems Accreditation Workshops
- Erosion Control & Mulch Utilization Workshop
- Windbreak & Drip Irrigation Training
- Pest Management Training
- Reseeding Workshop
- Water Harvesting Workshop
- Cooperative Weed Management Training

Many other affiliates have utilized our conference facilities for their meetings and or trainings.

- American Rainwater Catchment Systems Association
- Estancia Basin Watershed Health & Restoration Project
- Estancia Valley Classical Academy
- Greater Rio Grande Watershed Alliance
- Indian Hills Water Association
- Moriarty Garden Club Meetings
- Natural Resources Conservation Service Partnership Meetings
- New Mexico Coalition of Conservation Districts
- New Mexico Conservation Districts Employees
- New Mexico Department of Agriculture
- New Mexico Department of Transportation
- New Mexico Forest and Watershed Restoration Institute
- New Mexico Public Regulations Commission
- New Mexico State Land Office
- New Mexico Soil & Water Conservation Commission
- Rural Conservation & Development
- Torrance County Extension Service

ACCREDITATIONS

The Edgewood District Board is committed to providing staff with the most up-to-date information and trainings available that will benefit our landowners.

The Edgewood SWCD remains the only Conservation District in New Mexico to have staff that are Rainwater Catchment Systems Accredited (ARCSA) Professionals.



Staff Members
also hold a
New Mexico Public
Pesticide Applicator
License

Outreach & Funding

▪ Outreach

- Web Site
- Partnership with Chilili Land Grant
- Partnership with neighboring districts
- Bi-Monthly E-Newsletters to landowners and partners
- Information Pamphlets constructed and distributed
- Newspaper Articles and advertisements

▪ Committees

- Estancia Basin Watershed Restoration & Monitoring
- New Mexico Coalition of Conservation Districts
- NM Conservation District Employees
- Greater Rio Grande Watershed Alliance
- Central NM Weed Management Area
- Torrance County Wildfire Protection Committee
- Santa Fe County Wildfire Protection Committee

▪ Prior Year Funding Sources

- Received \$100,000 Legislative funding for reseeding equipment
- Received \$100,000 Legislative funding for building
- Received \$450,000 NMFA funding for building
- Received \$65,071 NM State Forestry Special Funding
- Received \$15,000 NM State Forestry Funding
- Received \$41,475 SWCC Grant Funding
- Received \$86,343 Youth Conservation Corps Funding
- Received \$140,000 WTB Special Funding
- Received \$133,000 WTB Funding
- Received \$109,000 WTB Funding
- Received \$150,000 WTB Funding
- Received \$165,000 WTB Funding
- Received \$110,000 WTB Funding

2011 – 2012 FUNDING

- Received \$96,666 WTB Funding
- Received \$90,000 Non-Federal Lands Funding
- Received \$110,000 Wild-land Urban Interface Funding
- Received \$5,833 NM State Forestry Funding

**Since 2006
the Edgewood District Staff
has acquired
\$1,778,388
in additional grant funding
that directly
benefits landowners!**

- ▣ We continually search for state, federal and private grant funding sources.

**Edgewood
Soil & Water
Conservation District
Assisting with
Natural Resource
Concerns.**

**Thank you for your
support!**